

weldcap<sup>®</sup> series  
radical. casual.

optrel<sup>®</sup>  
swiss made 



 weldcap<sup>®</sup>  
radical. casual.

 weldcap<sup>®</sup> bump  
radical. casual.

 weldcap<sup>®</sup> hard  
radical. casual.



Automatically better welding

# weldcap<sup>®</sup> series

radical. casual.

## REVOLUTIONARY COMFORT

The name says it all: the weldcap stands for an auto-darkening welder's cap that combines the comfort of a casual cap with the advantages of a full welding helmet. The combination of plastics and textile is unique. It's soft where it must be comfortable, and robust where you need maximum protection.

The comfortable and easy-to-change textile part is made from flame-retardant material. And it's hygienic: you can simply wash it.

Choose your perfect weldcap<sup>®</sup>!



weldcap<sup>®</sup>  
radical. casual.



The heart of this innovative product is the optical filter featuring a well-defined nose cut-out. The lens sits closer to the eyes compared to traditional welding helmets, increasing the welder's line of sight by 2.7 times!



weldcap<sup>®</sup> bump  
radical. casual.



While normal autodarkening hoods protect only part of the head, the weldcap<sup>®</sup> bump now completely protects the crown of the head against painful strikes. The bump cap also provides additional stability and a feeling of safety like a full-face helmet, without getting noticeably heavier.

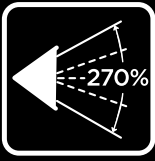


weldcap<sup>®</sup> hard  
radical. casual.



Compatible with standard hard hats, the weldcap hard attaches with minimal effort to your industrial helmet. The cap's design accommodates the use of ear muffs.

# Comfort, safety, productivity.



## EXTENSIVE FIELD OF VIEW

The heart of this innovative product is the optical filter featuring a well-defined nose cut-out. The lens sits closer to the eyes, increasing the welder's line of sight by almost 3 times! By expanding both the lateral and horizontal fields of vision, the welders' performance and safety is increased.



## MINIMAL WEIGHT

The optrel weldcap® weighs only 411g / 14.5 oz. and is an absolute lightweight. Since the ADF is closer to the eyes, the weight of the product moves closer to its center of gravity, increasing its stability and balance. The design eliminates pressure points and reduces strain on the welder's neck.



## MULTI-PURPOSE USE AT MAXIMUM PROTECTION

**Welding:** Darkening levels from 9 to 12 cover the majority of welding applications.

**Grinding:** With its Shade level 3 in inactive mode, the welder has a bright and well-lit view of the work-place. This feature makes the optrel weldcap® perfect for grinding jobs as well.



## SWIFT HANDLING

Like a cap; easy to mount and unmount again. Stow it in the optrel parking buddy, when it's not in use.











reddot award 2014  
winner



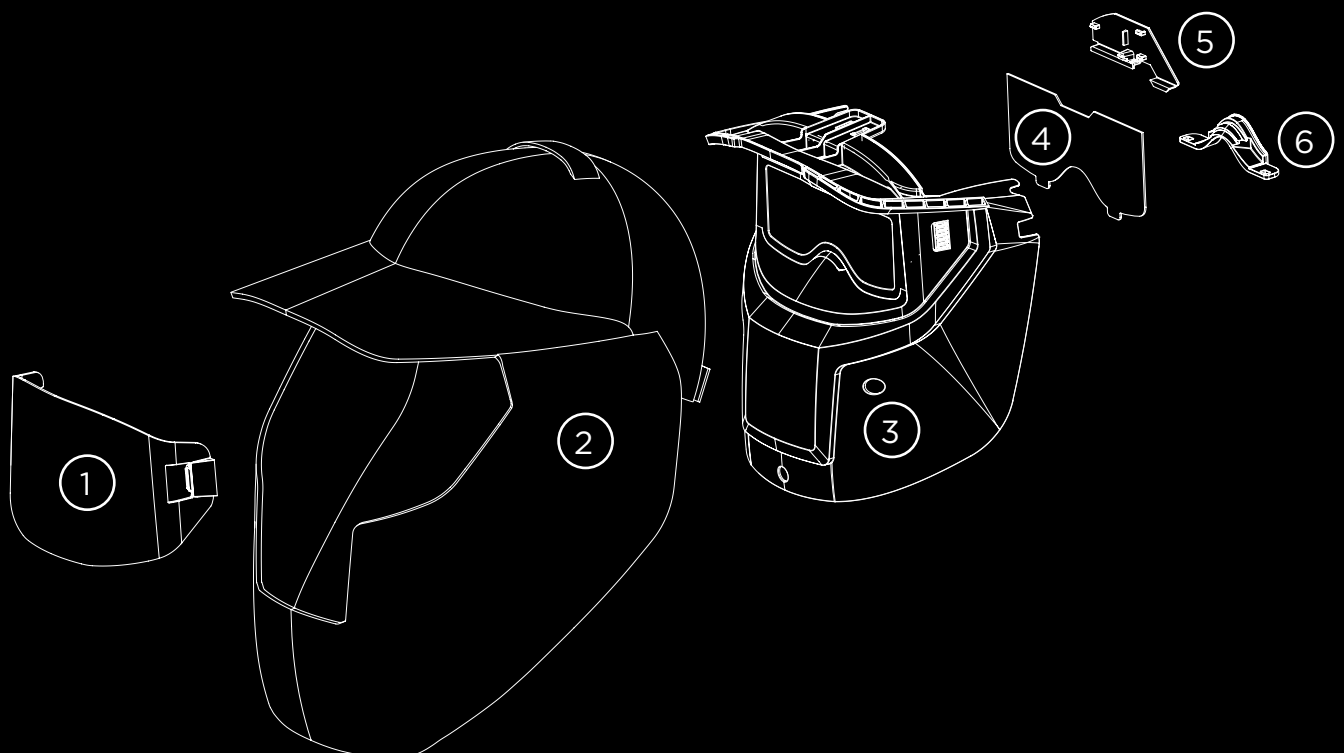
## TECHNICAL DATA

Description	<b>Lightweight, comfortable welding mask with ADF (infinite shade selection 9-12) and grind mode (Shade Level 3). Compatible with standard hard hats.</b>	
Shade levels	<b>Grind mode / inactive: shade level 3 Active: shade levels 9-12</b>	
Power supply	<b>2 pcs batteries 3V exchangeable (CR2032)</b>	
Operating time batteries	<b>1'000h operating time (Standby 10'000h)</b>	
Sensors	<b>Wide detection sensor</b>	
Switching time	<b>Light to dark: 0.16 ms at room temperature 0.11 ms at 55°C / 131°F Dark to light: 0.3 s</b>	
Viewing area	<b>Improved wide viewing area due to nose cut-out.</b>	
Classification EN379	<b>Optical class:</b>	<b>1</b>
	<b>Diffusion of light class:</b>	<b>1</b>
	<b>Variations in luminous transmittance class:</b>	<b>2</b>
	<b>Angle dependence of luminous transmittance class:</b>	<b>2</b>
Classification (textile) EN ISO 11611	<b>Class 1, A1 + A2</b>	
Classification	EN175 / AS / NZS 1337.1	weldcap face shield, Class F
	EN 166 / AS / NZS 1337.1	Front cover lens, Class B
	ANSI Z87.1	Impact resistance, Class Z87+
Shape stability	<b>Welding mask: up to 180 °C / 356 °F Front cover lens: up to 135 °C / 275 °F</b>	
Eye protection	<b>Ultraviolet / Infrared Protection: maximum protection at any shade level</b>	
Operating temperature	<b>-10 °C to +60 °C / 14 °F to 140 °F</b>	
Storage temperature	<b>-20°C bis + 80°C / -4°F bis 176°F</b>	
Weight	<b>appr. 400g</b>	
Application ranges	<b>Hand welding: gas welding, TIG welding, micro plasma welding, MIG welding, soldering with brass, spot welding, MMA welding with rutile electrode <i>Prohibited for laser welding!</i></b>	
Standards	<b>CE (EN 379, EN 166, EN 175), compl. CSA Z94 ANSI Z87.1, AS/NZS 1337.1/1338.1</b>	
Warranty	<b>2 years (except textile and batteries)</b>	

# Parts and accessories

Welding cap		Item no.	Main accessories		Item no.
	weldcap® RC 3/9-12	1008.000		weldcap® starter kit	5002.740
	weldcap® bump RCB 3/9-12	1008.001		optrel Parking Buddy	5002.900
	weldcap® hard RCH 3/9-12	1008.002		optrel bag	8000.100

Spare parts and accessories		Item no.
1	Front cover lens weldcap® series (5 pcs.)	5000.260
2a	Spare textile weldcap®	5002.800
2b	Spare textile weldcap® bump	5002.810
2c	Spare textile weldcap® hard	5002.820
3	Spare ADF cartridge weldcap® series	5012.800
4	Inside cover lens weldcap® series (5 pcs.)	5000.040
5	Battery cap weldcap® series (2 pcs.)	5002.720
6	Nose support weldcap® series (2 pcs.)	5002.700



Welding has never been so comfortable.  
Join the revolution.



Your optrel partner:



optrel AG  
industriestrasse 2  
CH-9630 wattwil  
switzerland  
www.optrel.com  
info@optrel.com

[optrel.com](http://optrel.com)



Art. no. 9412.017.00